

Solar Parking • Carport OPTI 1

Product Sheet

Flexible and efficient design



Carport OPTI-1 - 10 degrees inclination

Bluetop OPTI Solar Carports...

...is a range of standardized carport designs. The innovative structures are the basis for SOLAR PARKING - long lasting low carbon of your parking area. The structures are being supplied as complete kits and solutions for all common PV-modules.

Innovative product

Innovative designs make solar parking affordable and attractive !

Installation

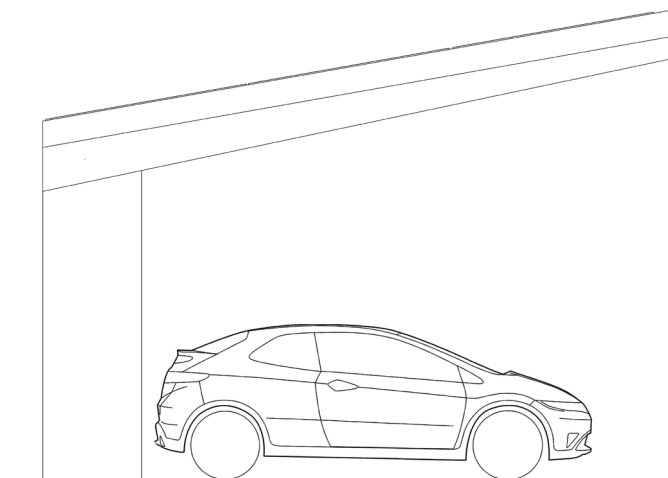
Easy and fast installation with a light-weight construction.

Materials

Zinc-magnesium in accordance to DIN 55928-8
PV-mounting system: stainless steel or aluminium.



- **Span up to 8,3 meters** - provides uninterrupted access
- **Hidden inverter** - an elegant, safe and accessible solution
- **Endless PV-roof** - optimized PV area and flexible placement of posts



Solar Parking • Carport OPTI 1

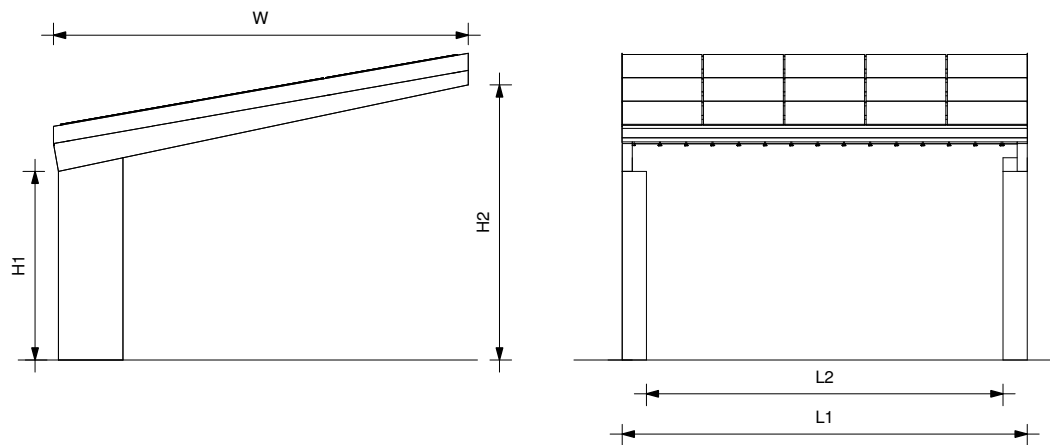
Flexible and efficient design

	Configuration				Measurements (mm)				
	Cars ¹	Modules ²	Layout ³	kWp	L1	L2	W	H1	H2
Vertical mounting									
OPTI 1-SV50	2	15	3x5	4.2	5000	4300	5006	2400	3415
OPTI 1-SV60	2.4	18	3x6	5.0	6000	5300	5006	2400	3415
OPTI 1-SV70	2.8	21	3x7	5.9	7000	6300	5006	2400	3415
OPTI 1-SV80	3.2	24	3x8	6.7	8000	7300	5006	2400	3415
Horizontal mounting									
OPTI 1-SH50	2	15	5x3	4.2	4985	4285	5006	2400	3415
OPTI 1-SH65	2.6	20	5x4	5.6	6650	5950	5006	2400	3415
OPTI 1-SH83	3.3	25	5x5	7	8315	7615	5006	2400	3415
Horizontal, Double glass									
OPTI 1-T50	2	15	5x3	4.2	5235	4535	5006	2400	3415
OPTI 1-T70	2.8	20	5x4	5.6	6960	6260	5006	2400	3415
OPTI 1-T85	3.4	25	5x5	7	8690	7990	5006	2400	3415

¹ Number of cars is just a guide, based on 2.5m width per car

² Figures for solar are based on 60-cells, 280 Wp modules - size: 1680x1000 mm

³ Endless horizontal mounting



Structural standards

Structural construction: EN 1990:2007, 2. edition, based on EN 1990 A1:2006, DS/EN 1990 A1/AC:2010, EN 1990 DK NA:2013.

Snow load: EN 1991-1-3:2007, 2. edition, based on EN 1991-1-3/AC:2009, EN 1991-1-3 DK NA:2012.

Wind load: EN 1991-1-4 2007, 2. edition, based on EN 1991-1-4/A1:2010, EN 1991-1-4 DK NA:2010, EN 1991-1-4 DK NA:2010 addition 1:2010, DS/EN 1991-1-4/AC:2010.

Accident load: EN 1991-1-7:2007, 2. edition, based on EN 1991-1-7/AC:2010, EN 1991-1-7 DK NA:2013.

Steel construction: EN 1993-1-1 + AC:2007, 2. edition, based on EN 1993-1-1 AC/2009, EN 1993-1-1 DK NA:2013

Pressed steel elements and sheets, additions: EN 1993-1-3:2007, 2. edition, based on EN 1993-1-3/AC:2010, EN 1993-1-3 DK NA:2013