



Solar Carport

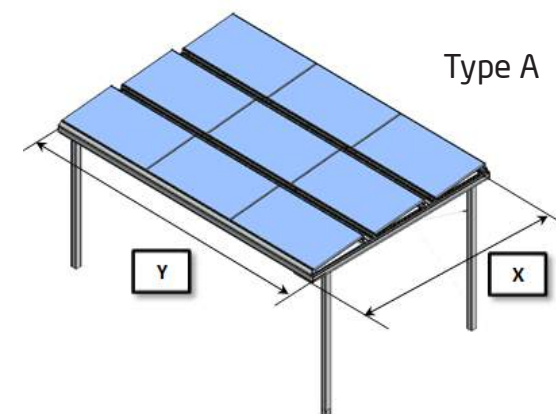
- for your home

your own green electricity • design and function



Sustainable savings!

- Let your electricity savings pay your carport.
- Multifunctional alternative to solar modules on your roof.
- Provide shade and protection from rain and snow.
- Protect your car.
- Can also be used for patio / garden.

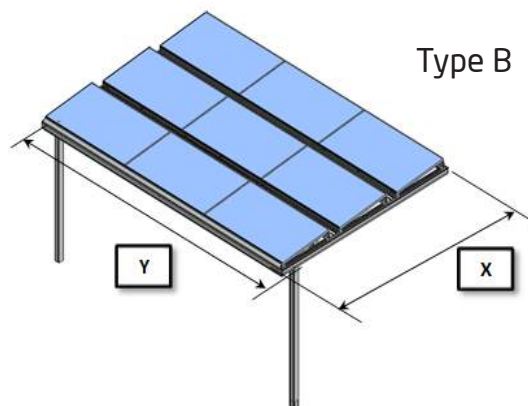


Type	Module-Power	Measurements (mm)	
		X	Y
A1	8 x 265W	4744	3418
A2	9 x 265W	3517	5094

See product sheet

Highest quality!

- Solar panels from Germany with 2-layer glass.
- 30 years product warranty, 30 years performance warranty.
- Strong construction with powder coated aluminium.
- Freestanding or as canopy.



Type	Module-Power	Measurements (mm)	
		X	Y
B1	8 x 265W	4744	3418
B2	9 x 265W	3517	5094

See product sheet



Solar Carport - Type A, Freestanding

EN April 2016

The solar modules are very sensitive and can face south, east or west. The maximum production can be achieved by modules facing south. Please note driveway directions and location of posts.

Type	Data			Measurements (mm)				
	Solar Modules	Efficiency*	Production**	X	Y	Z	X1	Y1
A1	8	2120 Wp	1930 kWh	4744	3418	2250	3544	3318

Suitable for 1 car - driveway from Y-side (or opposite) with additional width space.

Type	Data			Measurements (mm)				
	Solar Modules	Efficiency*	Production**	X	Y	Z	X1	Y1
A2	9	2385 Wp	2175 kWh	3517	5094	2250	3117	4994

Suitable for 1 car - driveway from X-side (or opposite) with additional width space.

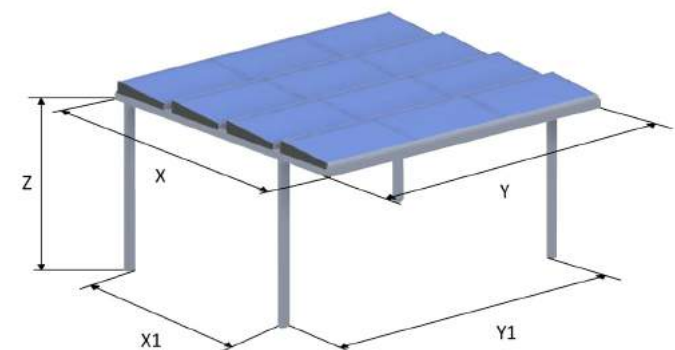
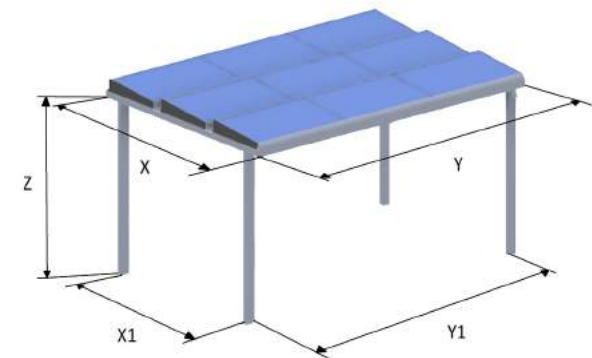
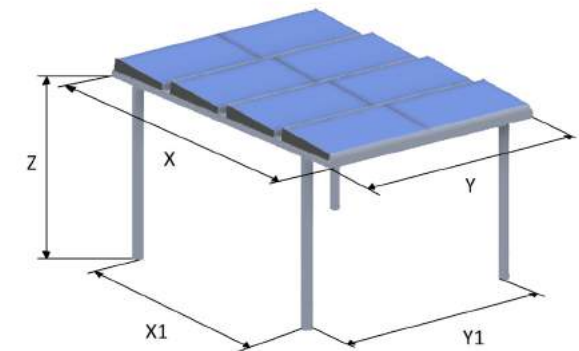
Type	Data			Measurements (mm)				
	Solar Modules	Efficiency*	Production**	X	Y	Z	X1	Y1
A3	12	3180 Wp	2905 kWh	4744	5094	2250	3544	4994

Suitable for 2 cars - driveway from Y-side (or opposite). Suitable for 1 car - driveway from X-side (or opposite).

Construction: Aluminium, powder coated silk matt.
Colors: Anthracite (RAL 7016) or white (RAL 9010)

* Solar modules: Solarwatt 60M style, 265 watt - 2 layers of glass - 30 years product warranty, 30 years performance warranty.

**Expected annual electricity production, Danish (average,) south direction



Product sheet

Solar Carport - Type B, Canopy

EN April 2016

BLUETOP
solar parking

The solar modules are very sensitive and can face south, east or west. The maximum production can be achieved by modules facing south. Please note driveway directions and location of posts.

Type	Data			Measurements (mm)				
	Solar Modules	Efficiency*	Production**	X	Y	Z	X1	Y1
B1	8	2120 Wp	1930 kWh	4744	3418	2250	3544	3318

Suitable for 1 car - driveway from Y-side (or opposite) with additional width space.

Type	Data			Measurements (mm)				
	Solar Modules	Efficiency*	Production**	X	Y	Z	X1	Y1
B2	9	2385 Wp	2175 kWh	3517	5094	2250	3117	4994

Suitable for 1 car - driveway from X-side (or opposite) with additional width space.

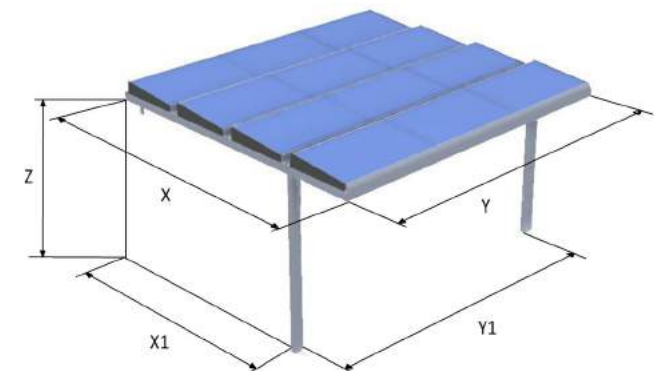
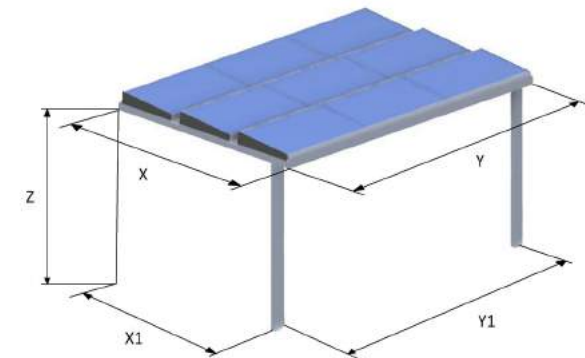
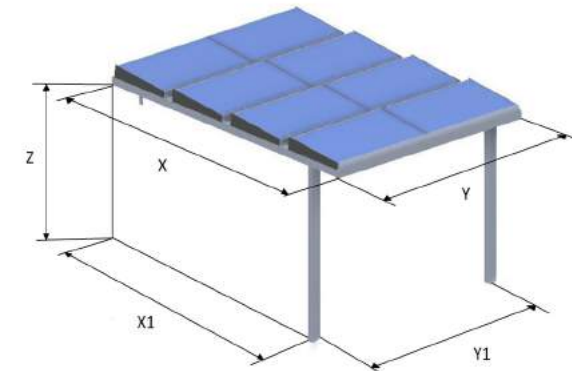
Type	Data			Measurements (mm)				
	Solar Modules	Efficiency*	Production**	X	Y	Z	X1	Y1
B3	12	3180 Wp	2905 kWh	4744	5094	2250	3544	4994

Suitable for 2 cars - driveway from Y-side (or opposite). Suitable for 1 car - driveway from X-side (or opposite).

Construction: Aluminium, powder coated silk matt.
Colors: Anthracite (RAL 7016) or white (RAL 9010)

* Solar modules: Solarwatt 60M style, 265 watt - 2 layers of glass - 30 years product warranty, 30 years performance warranty.

**Expected annual electricity production, (Danish average), south direction





Commercial solar carport



Special solutions

